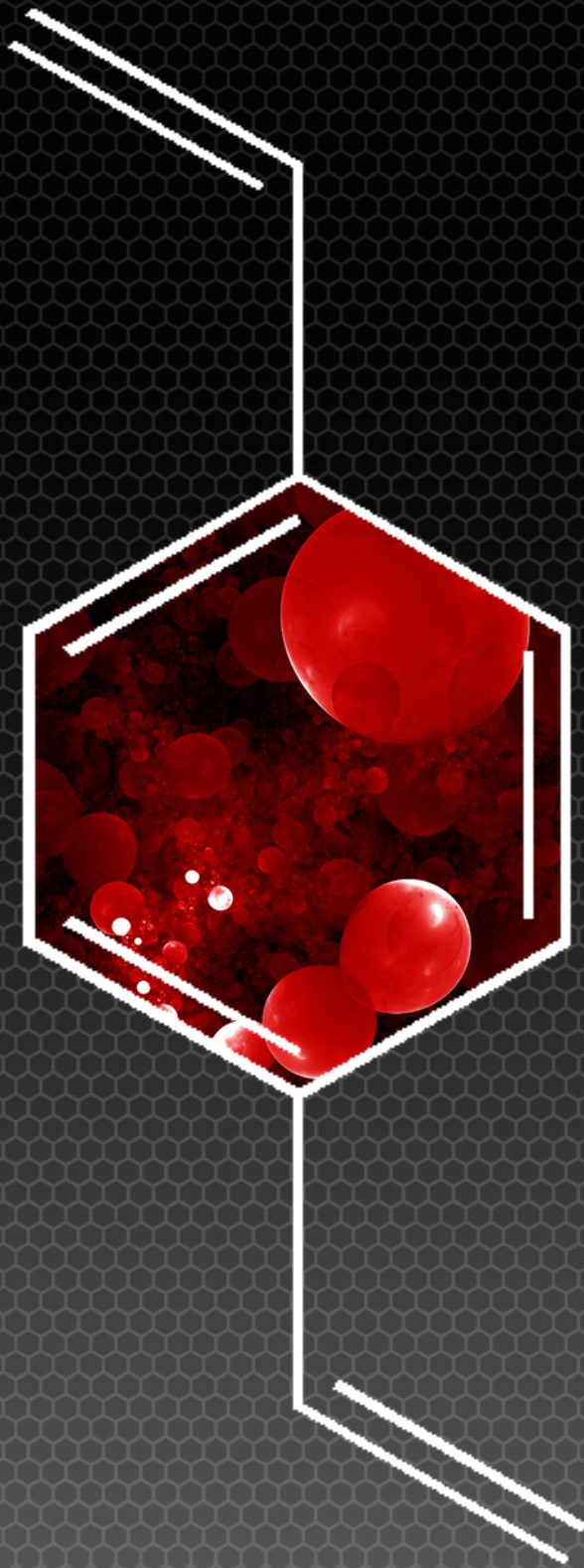


DIVINYLBENZENE

Material Solutions. Uncompromising Integrity.



Jordi Gel DVB Columns



Jordi's 100% Crosslinked Polymeric Column



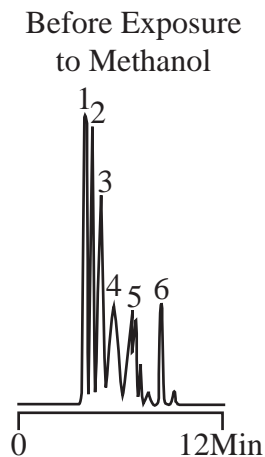
JORDI LABS

Jordi Labs manufactures a unique line of GPC columns featuring a *highly crosslinked, 100% divinylbenzene (DVB)* backbone. Jordi DVB columns offer unsurpassed strength and durability as compared to conventional GPC columns, which typically contain silica-based or polystyrene-DVB (PS-DVB) stationary phases. Our *proprietary DVB chemistry* provides a stationary phase that exhibits versatile solvent compatibility and performs well across the entire pH range.

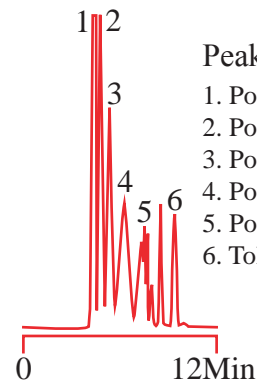
Jordi's 100% DVB Packings Show Unparalleled Stability in a Wide Range of Solvents

Jordi 100% DVB Packing

Column: 25cm x 10mm
Packing: Jordi 500Å GPC
Mobile Phase: THF
Flow Rate: 1.5 mL/min
Detection: RI



After Exposure to Methanol

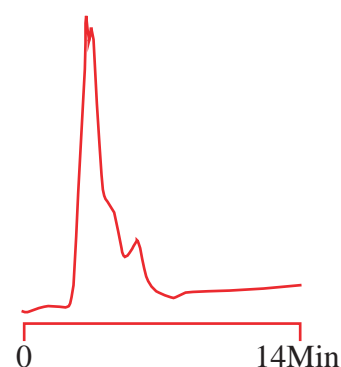
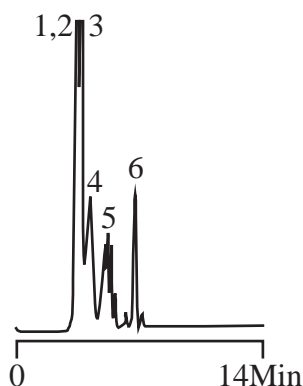


Peak Identification

- 1. Polystyrene 1.09 x 10⁶
- 2. Polystyrene 3.79 x 10⁴
- 3. Polystyrene 9.10 x 10³
- 4. Polystyrene 2.98 x 10³
- 5. Polystyrene 5.00 x 10²
- 6. Toluene

Competitor's PS-DVB Packing

Column: 30cm x 7.8mm
Packing: PS-DVB
Mobile Phase: THF
Flow Rate: 1.5 mL/min
Detection: RI



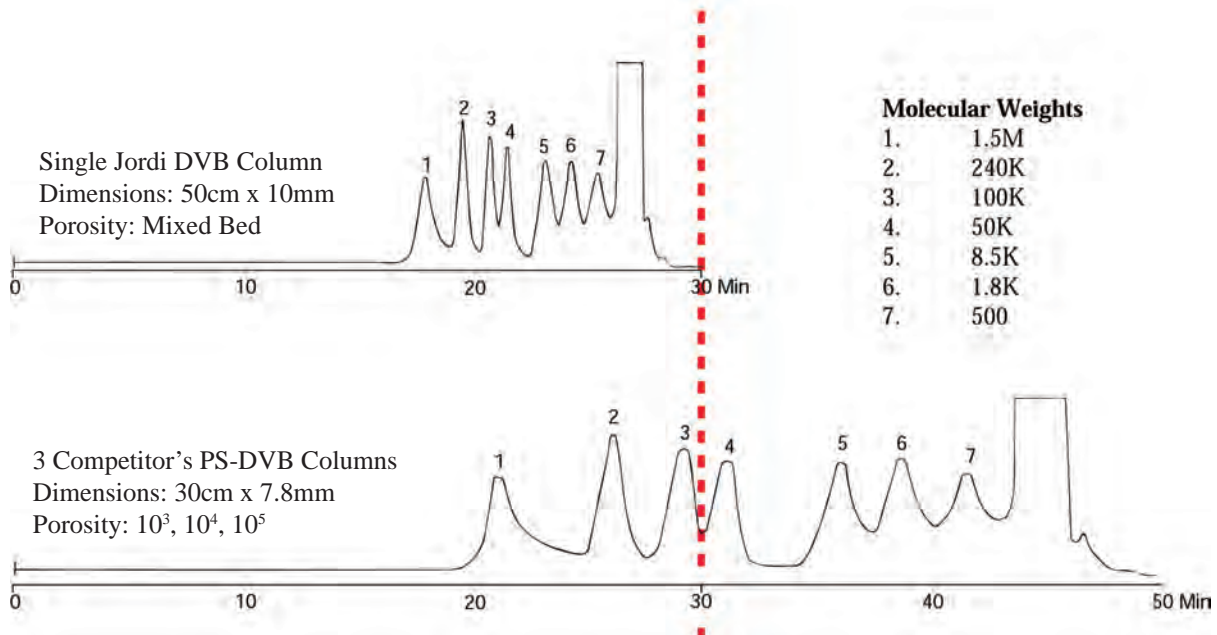
The highly crosslinked nature of Jordi DVB columns affords you the freedom to use a wide range of solvents, without risking a decrease in column performance. Jordi DVB resin has an inherent, high tolerance against shrinking and swelling, relative to mainstream PS-DVB packings.

Advantages of Jordi Gel DVB Columns

- Stable up to 150°C
- 0-14 pH stable
- Stable up to 30,000 psi
- Compatible with nearly all organic solvents
- Longer column life
- No shrinking or swelling

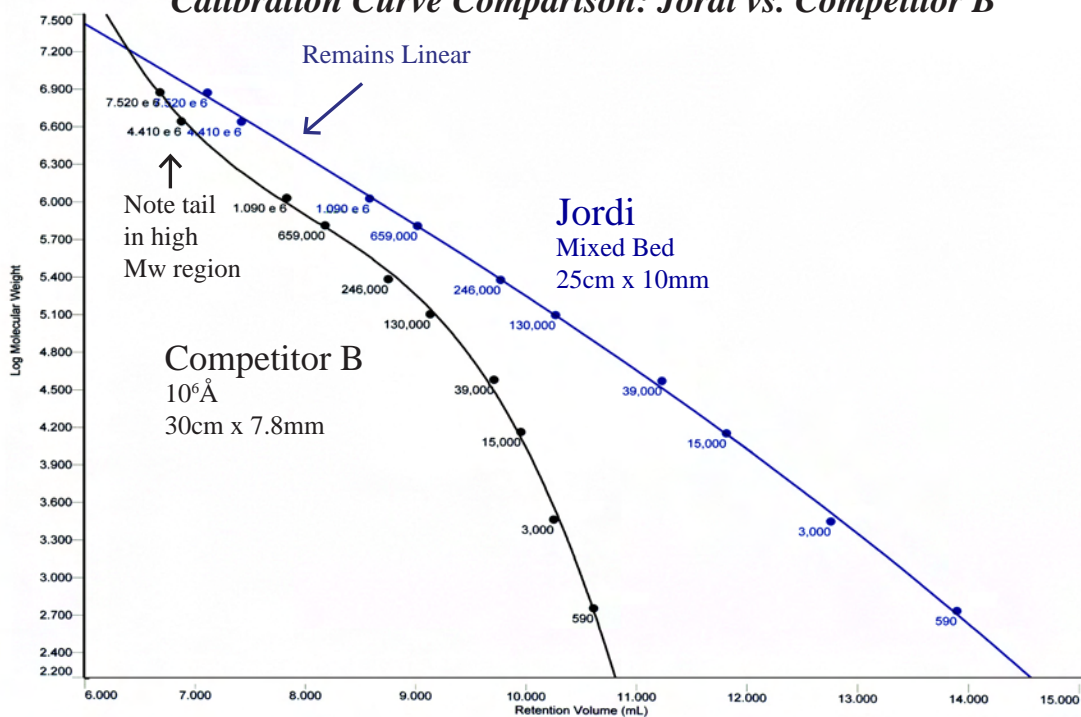
Standard Jordi resins boast a narrow average particle size of 5µm, translating to higher efficiency separations. Our DVB packings feature larger pore volumes than typical columns, allowing for better resolution and quicker runs. The highly crosslinked nature of Jordi resins imparts greater strength even at pressures up to 30,000 psi.

*Increase time and cost efficiency. Improve productivity.
1 Jordi column does the job of 3 conventional columns in 40% less time.*



Jordi Gel DVB columns produce highly linear calibration curves, and they offer high plate counts and pore volume for sharper peaks and superior resolution.

Calibration Curve Comparison: Jordi vs. Competitor B





JORDI LABS

Available GPC Porosities

100Å, 500Å, 10³Å, 10⁴Å, 10⁵Å, Mixed Bed, Solid Bead

JORDI PORE SIZE SPECIFICATIONS	
Description	MW Range
GPC Solid Bead	2,000-400,000,000
GPC 100Å	<100-5,000
GPC 500Å	<100-10,000
GPC 10 ³ Å	<100-50,000
GPC 10 ⁴ Å	100-100,000
GPC 10 ⁵ Å	10,000-10,000,000
GPC Mixed Bed	100-10,000,000

Column Dimensions

Jordi is pleased to discuss the opportunity for custom column dimensions

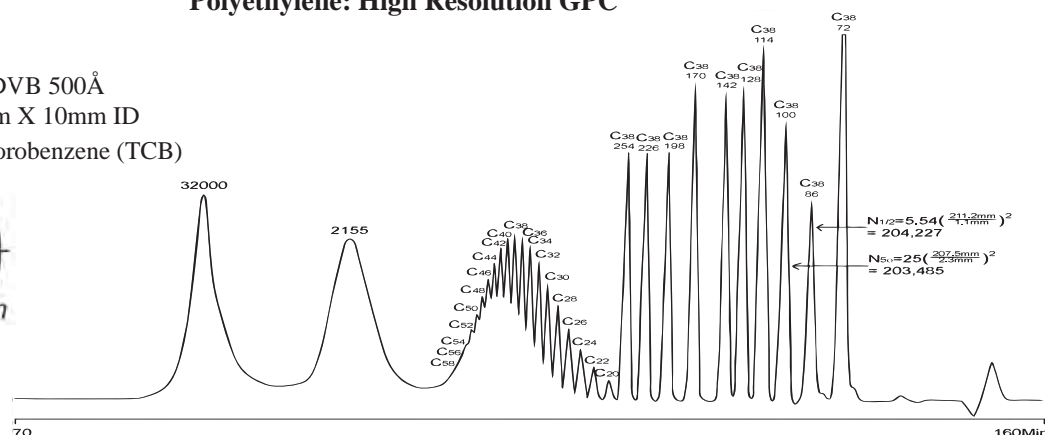
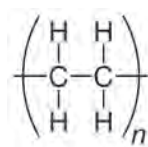
250 x 10 mm (standard), 500 x 10 mm, 300 x 7.8 mm, 250 x 4.6 mm, 150 x 4.6 mm

Jordi Labs provides some of the finest GPC products on the market, backed by over 25 years of research and development. Jordi Labs constantly strives to create and integrate innovative column technology for the benefit of chromatography science and most importantly, all of our valued customers. We welcome you to visit our extensive applications database online at www.jordilabs.com/applications.php.

Please call Jordi Labs today to discuss your routine or breakthrough application(s). Jordi routinely engages in successful method development projects, which often involve very complex polymer systems. We have the experience, the resources, the polymer expertise and the utmost dedication to solving even the most challenging polymer separation. Let Jordi help you find the GPC solution that suits your needs.

Featured Application Polyethylene: High Resolution GPC

Part Number: 15001
Description: Jordi DVB 500Å
Column Set: 6-50cm X 10mm ID
Mobile Phase: Trichlorobenzene (TCB)



Jordi Labs ♦ 4 Mill St ♦ Bellingham MA 02019
Phone: 508 966 1301 ♦ Fax: 508 966 4063
www.jordilabs.com ♦ info@jordilabs.com