

# Spektrallampen Spectral lamps



## High quality lamps

- Deuteriumlampen
- DURANIUM<sup>®</sup> L2D2-Lampen
- Xenonlampen
- Wolframlampen
- Deuterium lamps
- DURANIUM<sup>®</sup> L2D2 lamps
- Xenon lamps
- Tungsten lamps

# SPEKTRALLAMPEN SPECTRAL LAMPS

Unsere Deuteriumlampen unterliegen strengsten Qualitätsanforderungen und ständiger Kontrolle. Jede justierte Lampe wird mit einem individuellen Zertifikat geliefert. Mehr als 15 Jahre Erfahrung in der Fertigung und Justierung garantieren Ihnen die optimale Lampe für Ihr Gerät. Die Realisierung kundenspezifischer Anforderungen ist möglich.



- 1000 Stunden Vollersatz-Garantie
- Komplettes Produktspektrum
- High Quality Produkt mit sehr gutem Preis-/Leistungsverhältnis
- Nahezu jede Lampe hat einen Betriebsstundenzähler



- 2000 Stunden Vollersatz-Garantie
- 30% höhere Intensität gegenüber Standardlampen
- Bessere Basislinienstabilität (geringes Rauschen, weniger Drift)
- Exzellente thermische Eigenschaften durch Keramikstruktur
- Top-Qualität zum Spitzenpreis

Our deuterium lamps are subject to rigorous quality checks and are delivered with an individual certificate. Experience of more than 15 years in pre-alignment and manufacturing ensures the ideal lamp for your instrument. Customized specifications are feasible on request.



- 1000 hour lifespan guarantee
- Complete product range
- Excellent value for money for high quality products
- Nearly every lamp has a timer



- 2000 hour lifespan guarantee
- 30% higher intensity
- Higher basic line stability (limited noise, less drift)
- Excellent thermal features due to the ceramic structure
- Top quality for excellent price

[www.laseranalytik.de](http://www.laseranalytik.de)  
[info@laseranalytik.de](mailto:info@laseranalytik.de)

# INHALT CONTENT

	Hersteller   Manufacturer	Seite   Page	
<b>A</b>	ABI	4	
	Abimed	4	
	A.C.S.	4	
	Agilent Technologies	4	
	Altex	4	
	Analytik Jena	4	
	Aminco	4	
	Applied Biosystems	4	
<b>B</b>	BAI	4	
	Barspec	4	
	BAS	4	
	Bausch & Lomb	4	
	BIO-TEK	5	
	Beckman	5	
	BESTA	5	
	Biorad	5	
	Biotronic	5	
	Bischoff	5	
	Büchi	5	
<b>C</b>	Camag	5	
	Carlo Erba	5	
	Coleman	5	
	Colora	5	
	Cecil	6	
<b>D</b>	Desaga	6	
	Dr. Bruno Lange	6	
	Dupont	6	
	DURATEC	6	
<b>E</b>	Eppendorf	6	
	ERC	6	
	Erma	6	
<b>G</b>	GAT	6	
	Gilford	7	
	Gilson	7	
	Gynkotek	7	
<b>H</b>	Hach	7	
	Hitachi / Merck	7	
	Hi-Tech	7	
<b>I</b>	IBM	8	
	ISCO	8	

	Hersteller   Manufacturer	Seite   Page
<b>J</b>	Jasco	8
	Jobin Yvon	8
	Joyce Loebel	8
<b>K</b>	Kartek	8
	Knauer	8
	Kontron	8/9
	Kratos	9
	Kronlab	9
<b>L</b>	Lange	9
	LATEK	9
	LC-Packings	9
	LDC-Milton Roy (TSP)	9
	Linear	9
	LKB-Pharmacia	9
<b>M</b>	Merck	9
	Micromeritics	9
	Milton-Roy	9
<b>N</b>	Nicolet	9
<b>P</b>	PerkinElmer	10
	PE-Hitachi	10
	Philips	10
	Pye-Unicam	10
<b>R</b>	Rainin	10
<b>S</b>	Saitron	11
	Shimadzu	11
	Sigma	11
	Soma	11
	Spectra Physics	11
	Sunchrom	11
Sykam	11	
<b>T</b>	Thermo	11
	Turner	12
<b>U</b>	Unicam	12
<b>V</b>	Varian	12
<b>W</b>	Waters	13
<b>Z</b>	Zeiss	13

# SPEKTRALLAMPEN SPECTRAL LAMPS

Manufacturer Model	D2 lamps P/N	DURANIUM L2D2 lamps P/N	Xe/Hg/vis lamps P/N
--------------------	--------------	-------------------------	---------------------



ABI			
see Applied Biosystems			

Abimed			
112	092084		
115	192399		
116	192399		
117	192399		
118	192400		
119	192400		
155	192400		
170	192885	292885	194885 (vis)
Holochrome	192039		
Spectrochrome	092029		

A.C.S.			
LC750/11	092045		
LC750/12	092045		

Agilent Technologies			
1040	192883		
1046			194846 (Xe)
1047A			194802 (vis)
1050 DAD	192883	292883	
1050 VWD (A-Series)	092853	292725	
1050 MWD	192883	292883	
1080, 1081, 1081B	092009		
1084B	092009		
1090	192883	292883	
1100 VWD	192886	292886	
1100 DAD	192885	292885	194885 (vis)
1100 MWD	192885	292885	194885 (vis)
1100 CE	192887	292887	
1200 VWD	192886	292886	
1200 DAD	192885	292885	194885 (vis)
1200 MWD	192885	292885	194885 (vis)
79853A VWD (A-Series)	092853	292725	
79853C VWD (C-Series)	192883	292883	
8452A	192804		194804 (vis)
8453	192853	292853	

Altex			
100	092044		
155	092051		
163	092084		
164	092016		
165	092016		
166	192205	292205	
167	092016		

Manufacturer Model	D2 lamps P/N	DURANIUM L2D2 lamps P/N	Xe/Hg/vis lamps P/N
--------------------	--------------	-------------------------	---------------------



Analytik Jena			
see Zeiss			

Aminco			
DW2	092033		

Applied Biosystems			
15X	092026	292026	
120A, 130A	092026	292026	
230A	092026	292026	
270A	092026	292026	
471A	092026	292026	
1000S	092416		
SF 757	092026	292026	094126 (vis)
SF 759A	092026	292026	094126 (vis)
SF 770	092026	292026	
SF 773	092026	292026	094126 (vis)
SF 783, SF 783A	092026	292026	094126 (vis)
SF 785A	092026	292026	094126 (vis)
SF 970	092026	292026	
SF 980	092026	292026	094126 (vis)

BAI			
see Applied Biosystems			

Barspec			
401	092044		
488	092044		

BAS			
200	192141		195200 (vis)

Bausch & Lomb			
(see also LDC-Milton Roy)			
200	092042		
700	092042		
710	092042		
2000	092042		
DE50	092042		
Genesis 5	092042		
Spectronic 20 (D)			094046 (vis)
Spectronic 21 (D)	092042		094045 (vis)
Spectronic 601	092042		
Spectronic 1001	092042		
Spectronic 1201	092042		



Manufacturer Model	D2 lamps P/N	DURANIUM L2D2 lamps P/N	Xe/Hg/vis lamps P/N
--------------------	--------------	-------------------------	---------------------



BIO-TEK			
see Kontron			

Beckman			
24, 25, 26, 100	092043		
155	092051		
163	092084		
165	092016		
167	092016		
166	192205	292205	194205 (vis)
168	192105	292105	
5200	092016		
DU 6	092016		094860 (vis)
DU 7	092016		094860 (vis)
DU 8	092016		094860 (vis)
DU 40	092016		
DU 50	092016		
DU 60	192360		094360 (vis)
DU 62	192360		094360 (vis)
DU 64	192360		094360 (vis)
DU 65	192360		094360 (vis)
DU 68	192360		094360 (vis)
DU 70	192305		094360 (vis)
DU 500	192361		
DU 520	192361		
DU 530	192361		
DU 600	192308		094360 (vis)
DU 620	192308		
DU 630	192308		
DU 640	192308		094361 (vis)
DU 650	192308		094360 (vis)
DU 7000	192308		094360 (vis)
DU 7400	192308		094360 (vis)
DU 7500	192308		094360 (vis)
P/ACE 2000	192307	292307	
P/ACE 5000	192306		
P/ACE 5010	192306		
P/ACE 5500	192306		
P/ACE 5510	192306		
P/ACE MDQ	192309		

BESTA			
SPD-6A(V)	092620	292620	094605 (vis)
Vario 600	092725		
Vario 700	092725		

Manufacturer Model	D2 lamps P/N	DURANIUM L2D2 lamps P/N	Xe/Hg/vis lamps P/N
--------------------	--------------	-------------------------	---------------------



Biorad			
1305	092055		
1306	092055		
1706 / 1806	092725		
Remedi	292056		
MDL 1790 / 1801	192141		195200 (vis)

Biotronic			
BT3030	092055		
BT3035	092051		
BT8200	092725		
BT9510	192141		195200 (vis)
BT9520	192141		195200 (vis)

Bischoff			
Lambda 1000 / 1010	192006	292006	
DAD3L	292006		
SPD-6A(V)	092620	292620	094605 (vis)

Büchi			
Ultraspec	192122		
C-635	192714		

Camag			
TLC-Scanner II (w/Holder)	192004		094004 (vis)
TLC-Scanner II (wo/Holder)	092004		094004 (vis)
TLC-Scanner III	192005	292005	094005 (vis)

Carlo Erba			
SP601	092032		
UV VIS 20	192141		195200 (vis)
Other Instruments	092033		

Coleman			
55	092044		
124	092044		
550	092044		
552	092044		

Colora			
(see also Hitachi)			
SPC 300			194210 (vis)



092026



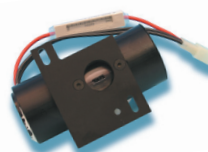
192305



192105



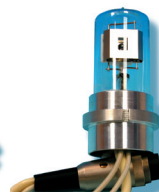
192307



192141



092725



192006

# SPEKTRALLAMPEN SPECTRAL LAMPS

Manufacturer Model	D2 lamps P/N	DURANIUM L2D2 lamps P/N	Xe/Hg/vis lamps P/N
--------------------	--------------	-------------------------	---------------------



Cecil			
Serie 2	092059		
Serie 1000	092059		
Serie 1070	092059		
Serie 2000	092059		
Serie 5000	092059		
Serie 6000	092059		
Serie 7000	092027		
202	092027		
212, 212A	092027		
272	092027		
292	092027		
373	092027		
393	092027		
505	092027		
515	092027		
545	092027		
588	092027		
594	092027		
595	092027		
599	092027		
2012	092027		
2112	092027		
5095	092027		

Desaga			
CD60	092028		
TLC (254nm)			094254 (UV)
TLC (364nm)			094364 (UV)

Dionex			
CES I	192107	292107	
DSA-1	192141		195200 (vis)
PDA-100	192109		194109 (vis)
SP6	092620	292620	094605 (vis)
UVD 160-2	192204	292204	
UVD 320	192204	292204	
UVD 340 S	192204	292204	
UVD 170 S	192204	292204	
VDM-1	192141		
VDM-2	192107	292107	

Dr. Bruno Lange			
see Lange			

Manufacturer Model	D2 lamps P/N	DURANIUM L2D2 lamps P/N	Xe/Hg/vis lamps P/N
--------------------	--------------	-------------------------	---------------------



Dupont			
825	092044		
837	092084		
850	092044		
852	092084		
860	092072		
862	092072		
870	092066		

DURATEC			
S 3200	192141		195200 (vis)
S 3201	192141		195200 (vis)
S 3205	192141		195200 (vis)
S 3206	192141		195200 (vis)
DDT-3200	926200-102	926200-101	926200-103
SPD 6A(V)	092620	292620	094605 (vis)

Eppendorf			
(see also Biotronic)			
1101 M			094610 (Hg)

ERC			
see Erma and Soma			

Erma			
7210	092044		
7211	092044		
7215	192750		
7217	192751		
7510			194815 (vis)
7511			194815 (vis)
7512			194816 (vis)
7515			194816 (vis)

GAT			
LCD 500	192141		195200 (vis)
LCD 502	192141		195200 (vis)
LCD 503	192141		195200 (vis)
LCD 550	192141		195200 (vis)
PFD 301			194141 (Xe)
PHD 601	192141		



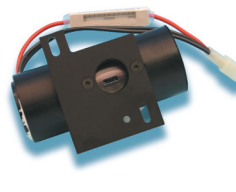
192122



192109



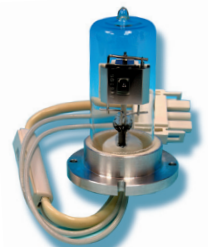
092620



192141



192107



192204

Manufacturer Model	D2 lamps P/N	DURANIUM L2D2 lamps P/N	Xe/Hg/vis lamps P/N
--------------------	--------------	-------------------------	---------------------



Gilford			
200	092084		
220	092084		
222	092084		
230	092084		
240	092084		
250	092084		
252	092084		
260	092084		
2000	092084		
2400	092084		
2600	092084		
Response	092044		

Gilson			
112	092084		
115	192399		
116	192399		
117	192399		
118	192400		
119	192400		
15x, 160	192400		
170	192885	292885	194885 (vis)
Holochrome	192039		
Spectrochrome	092029		

Gynkotek			
SP6	092620	292620	094605 (vis)
UVD 160-2	192204	292204	
UVD 170 S	192204	292204	
UVD 320	192204	292204	
UVD 340 S	192204	292204	

Hach			
DR/4000 U	192137		

Hewlett/Packard see Agilent Technologies			

Manufacturer Model	D2 lamps P/N	DURANIUM L2D2 lamps P/N	Xe/Hg/vis lamps P/N
--------------------	--------------	-------------------------	---------------------



Hitachi / Merck			
100-10, 100-30	092049		
100-40	092049		094862 (vis)
100-50	092049		
100-60	092049		094862 (vis)
101	092051		
102	092051		
111	092051		
124	092049		
150-20	192049		094861 (vis)
181	092043		
200	192049	292049	
300	192049	292049	
330	192049	292049	
340	192049	292049	
655A22	192049	292049	
2000	192049	292049	
3200	192049	292049	
F1000			260021 (Xe)
F1050			260021 (Xe)
F2000			260021 (Xe)
F3000			260021 (Xe)
L2400, L2420	192049	292049	094866 (vis)
L2450, L2455	192049	292049	094866 (vis)
L2500	192049	292049	
L3000	192049	292049	
L4000	192049	292049	
L4200, L4250	192049	292049	
L4500	192049	292049	
L7000	192049	292049	
LaChrom L7400, L7420	192049	292049	
LaChrom L7450 DAD	192049	292049	
LaChrom L7455 DAD	192049	292049	
LaChrom L7480	192049	292049	
U1000	192049	292049	094860 (vis)
U1100	192049	292049	094860 (vis)
U1500	192049	292049	094860 (vis)
U1800	192051		
U2000	192049	292049	094860 (vis)
U2001	192049	292049	094860 (vis)
U2800	192051		
U2810	192051		
U3010	192049	292049	094860 (vis)
U3210	192049	292049	094860 (vis)
U3410	192049	292049	094860 (vis)
U3501	192049	292049	094860 (vis)
U4001	192049	292049	094860 (vis)
U4010	192049	292049	094860 (vis)

Hi-Tech			
Stop Flow	092013		



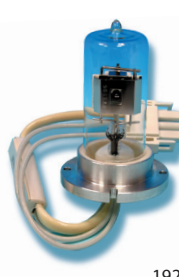
192750



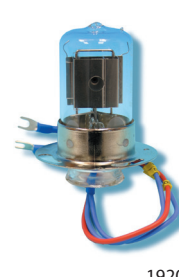
192399



092084



192204



192049



260021

# SPEKTRALLAMPEN SPECTRAL LAMPS

Manufacturer Model	D2 lamps P/N	DURANIUM L2D2 lamps P/N	Xe/Hg/vis lamps P/N
--------------------	--------------	-------------------------	---------------------



IBM			
LC-Detectors	092084		
Photometers	092055		

Isco			
1800	092001		

Jasco			
870	092725	292725	
875	092725	292725	
970	192726	292726	
975 (A-Series)	092725	292725	
975 (B- and C-Series)	192726	292726	
7800		292727	
7850		292727	
Fluorescence detector			260021 (Xe)
J715			094055 (Xe)
Multi 320	092055		
RI-930 / RI-1530			194426 (vis)
Polarimeter P-1010			094361 (vis)
UV1570 / UV1575	192726	292726	
UV2070 / UV2075	192726	292726	
Uvidec 4D	092044		
Uvidec 100	092051		
Uvidec 100 II	092051		
Uvidec 100 III	092055		
Uvidec 100 IV	092055		
Uvidec 100 V	092055		
Uvidec 100 VI	092055		
Uvidec 320	092051		
Uvidec 340	092051		
Uvidec 420	092051		
Uvidec 430	092055		
Uvidec 505 / 510	092051		
Uvidec 610 / 650	092055		
Uvidec 710	092051		
V500, V530		292727	094025 (vis)

Jobin Yvon			
Monospec 103	092033		

Joyce Loebel			
Chromoscan	092033		
Scan 400	092084		

Manufacturer Model	D2 lamps P/N	DURANIUM L2D2 lamps P/N	Xe/Hg/vis lamps P/N
--------------------	--------------	-------------------------	---------------------



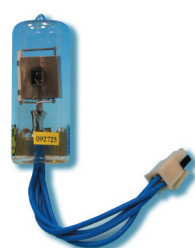
Kartek			
K95	092076		

Knauer			
Dual-Detektor			094636 (Hg)
UV Photometer			194636 (Hg)
87.00	192120	292120	
97.00	192120	292120	
2151	192120	292120	
K-2650	192714		
WellChrom K-2000/2001	192714		
WellChrom K-2500/2501	192714		
WellChrom K-2600/2700	192714		
PDA 2800, K-2800	192713		

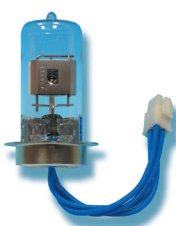
Kontron			
Fluorescence detector			260021 (Xe)
330	192312	292312	
332	192312	292312	
430	192312	292312	194430 (vis)
430A	192312	292312	194430 (vis)
432	192312	292312	194430 (vis)
440 DAD	192132		
535		292312	
540 DAD	192314	292314	
545V DAD	192314	292314	
710	092084		094860 (vis)
70	092084		094860 (vis)
715	092084		
720	092084		094860 (vis)
810 / 810P	092084		094860 (vis)
820	092084		094860 (vis)
860	092084		094860 (vis)
922	092084		
Uvikon 600	092084		
Uvikon 700	092084		
Uvikon 710	092084		
Uvikon 720	092084		094860 (vis)
Uvikon 720LC	092084		
Uvikon 722	092730		
Uvikon 725	092044		
Uvikon 730	092730		094860 (vis)
Uvikon 730LC	092730		
Uvikon 800	092084		
Uvikon 810	092084		094860 (vis)
Uvikon 820	09208		094860 (vis)
Uvikon 860	092084		094860 (vis)
Uvikon 922	192304		094304 (vis)
Uvikon 923	192304		094304 (vis)
Uvikon 930	192304		094304 (vis)
Uvikon 931	192304		094304 (vis)



192120



092725



192726



192714



192312



192132



Manufacturer Model	D2 lamps P/N	DURANIUM L2D2 lamps P/N	Xe/Hg/vis lamps P/N
--------------------	--------------	-------------------------	---------------------



Kontron continued			
Uvikon 940	092084		094304 (vis)
Uvikon 941	092084		094304 (vis)
Uvikon 942	092084		094304 (vis)
Uvikon 943	092084		094304 (vis)
Uvikon XS (wo/holder)	092303		
Uvikon XS (w/holder)	192303		
Uvikon XL (wo/holder)	092303		
Uvikon XL (w/holder)	192303		

Kratos			
see Applied Biosystems			

Kronlab			
UV/vis 2.5	192714		

Lange			
Cadas 100	192138		094138 (vis)
Cadas 200	192139		094138 (vis)
DR/4000 U	192137		
LP1W, LP2W			194099 (vis)
LKT			194099 (vis)
LS500	192138		

LATEK			
Spectrometer I, II, III	092084		
Spectrometer D	092084		
VISI-6	092620	292620	094605 (vis)
VISI-DUO	192141		195200 (vis)

LC-Packings			
UltiMate	192714		

LDC-Milton Roy (TSP)			
see also Bausch&Lomb			
3100	092084		
3200	092084		
4000	092084		
4100	092084		
4200	092084		
5000 (PDA)*	192181		
Spectromonitor I	092084		
Spectromonitor II	092084		
Spectromonitor III	092084		
Spectromonitor D	092084		
Spectronic 3000	092085		
UV-Monitor II			094301 (Hg)
UV-Monitor III			094301 (Hg)

Manufacturer Model	D2 lamps P/N	DURANIUM L2D2 lamps P/N	Xe/Hg/vis lamps P/N
--------------------	--------------	-------------------------	---------------------



Linear			
200	192141		195200 (vis)
201	192141		195200 (vis)
203	192141		195200 (vis)
204	192141		195200 (vis)
205	192141		195200 (vis)
206	192141		195200 (vis)

LKB-Pharmacia			
2140 *	092340		
2141 *	092341		
2151	192120	292120	
2251	192006	292006	
4050	092342		
4060	192123		
Åkta Explorer *			194122 (Xe)
Novaspec			094122 (vis)
Ultraspec I	192122		094122 (vis)
Ultraspec II	192122		094122 (vis)
Ultraspec III	192122		094122 (vis)
Ultrospec 1000	**192124		094124 (vis)
Ultrospec 2000	**192124		094124 (vis)
Ultrospec 3000	**192124		094124 (vis)

Merck			
see Hitachi/Merck			

Micromeritics			
785, 786	092046		

Milton-Roy			
see LDC and Bausch&Lomb			

Nicolet			
Evolution 100 / 500	192149		094760 (vis)

\* Althaler notwendig / old holder required

\*\* D2- und vis-Lampe im Halter / D2 and vis lamp assembly



192314



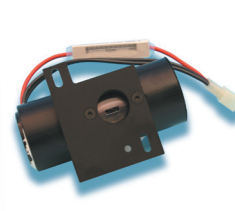
192304



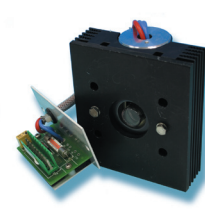
192122



192714



192141



092341

# SPEKTRALLAMPEN SPECTRAL LAMPS

Manufacturer Model	D2 lamps P/N	DURANIUM L2D2 lamps P/N	Xe/Hg/vis lamps P/N
--------------------	--------------	-------------------------	---------------------



Manufacturer Model	D2 lamps P/N	DURANIUM L2D2 lamps P/N	Xe/Hg/vis lamps P/N
<b>PerkinElmer</b>			
AAnalyst 100, 300	192144		
AAnalyst 200, 400	192142		
AAnalyst 600,700,800	192720		
AAS 1100, 1100B	192720		
AAS 2100	192720		
AAS 3100	192144		
AAS 3110	192144		
AAS 3300	192144		
AAS 4100	192720		
AAS 3030	092720		
EZ150, EZ201, EZ210	192049		194710 (vis)
Integral 2000	092044		
Integral 4000	092044		
Lambda 1	192147		194710 (vis)
Lambda 2	192143		194710 (vis)
Lambda 3	192147		194710 (vis)
Lambda 5	192143		194710 (vis)
Lambda 7	192143		194710 (vis)
Lambda 9	192143		194710 (vis)
Lambda 10, 11, 12	192143		194710 (vis)
Lambda 14, 15, 16	192143		194710 (vis)
Lambda 17, 18, 19	192143		194710 (vis)
Lambda 20, 25	192143		194710 (vis)
Lambda 30, 35	192143		194710 (vis)
Lambda 40, 45	192143		194710 (vis)
Lambda 650, 800	192143		194710 (vis)
Lambda 900, 950	192143		194710 (vis)
Lambda Array 3840	092056		
Lambda Bio	192143		194710 (vis)
LC 55, 55B	092044		
LC 65T	092044		
LC 75	092044		
LC 85, 85B	092044		
LC 90	192740		
LC 95	092044		
LC 135	092044		
LC 235	092044		
LC 290	192740	292740	
LC 295	192739		
LC 480	192143		
M 550	092050		
M 550S	192073		
M 551	092050		
M 551S	192073		
M 552 up to S/N 2030	092050		
M 552 from S/N 2030	192073		
M 554	192073		
M 555	092050		

Manufacturer Model	D2 lamps P/N	DURANIUM L2D2 lamps P/N	Xe/Hg/vis lamps P/N
--------------------	--------------	-------------------------	---------------------



Series 200 UV/vis	092026	292026	094126 (vis)
Series 200 DAD	192072		
Series 200 Fluoresc.			094072 (Xe)
272	092057		
280	092057		
360	092057		
370	092057		
372	092057		
373	092057		
380	092057		
400	092054		
410	092054		
420	092054		
430	092054		
460	092057		
550 SE	192073		194730 (vis)
2280	092057		
2380	092057		
4000	092057		
5000	092057		

<b>PE-Hitachi</b>			
200	192049	292049	
320, 330, 340	192049	292049	
556, 557	192049	292049	

<b>Pharmacia</b>			
see LKB-Pharmacia			

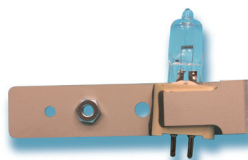
<b>Philips</b>			
see Unicam			

<b>Pye-Unicam</b>			
see Unicam			

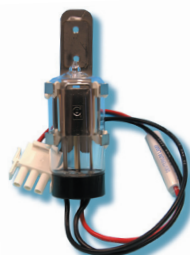
<b>Rainin</b>			
UV-1			094041 (Xe)



192720



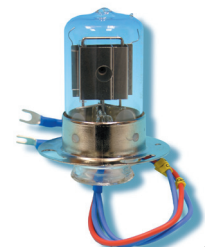
194710



192143



192740



192049

Manufacturer Model	D2 lamps P/N	DURANIUM L2D2 lamps P/N	Xe/Hg/vis lamps P/N
--------------------	--------------	-------------------------	---------------------



Saitron			
Monospec B	092084		

Shimadzu			
AA660	092600	292600	
AA667	092600	292600	
CS 930	092600	292600	194620 (vis)
LC-2010	192619	292619	
RF-530			260019 (Xe)
RF-535			260021 (Xe)
RF-551			260021 (Xe)
RF-10A			260021 (Xe)
SPD-2A	092620	292620	
SPD-6A	092620	292620	
SPD-6AV	092620	292620	094605 (vis)
SPD-10A	192618	292618	
SPD-10Avp	192618	292618	
SPD-10AV	192618	292618	
SPD-10AVvp	192618	292618	
SPD-M10Avp	192618	292618	094618 (vis)
SPD-M10A	192617		
SPD-M10AV	192617		
SPD-20A	192618	292618	
SPD-20AV, SPD-M20A	192618	292618	
UV-120	092600	292600	194620 (vis)
UV-150 / UV-150-2	092600	292600	194620 (vis)
UV-160 / UV-160A	092600	292600	094860 (vis)
UV-240	092600	292600	094860 (vis)
UV-250	092600	292600	
UV-260	092600	292600	
UV-365	092600	292600	
UV 625	092600	292600	
UV-1200 Series	092600	292600	094605 (vis)
UV-1600 Series	092600	292600	094860 (vis)
UV-1700 Series	092600	292600	094605 (vis)
UV-2100	092600	292600	094860 (vis)
UV-2401PC, 2501PC			094605 (vis)
UV-3000	092600	292600	
UV-3100	092600	292600	094860 (vis)

Sigma			
ZWS11	092084		
NA3 Analyzer	092086		

Soma			
S 3110	192740	292740	
S 3120	192740	292740	
S 3702	192740	292740	
S 3710	192739		

Manufacturer Model	D2 lamps P/N	DURANIUM L2D2 lamps P/N	Xe/Hg/vis lamps P/N
--------------------	--------------	-------------------------	---------------------



Spectra Physics			
see Thermo and LDC			

Sunchrom			
Spectra Flow 500	192141		195200 (vis)
Spectra Flow 501		292715	

Sykam			
S 3200	192141		195200 (vis)
S 3201	192141		195200 (vis)
S 3205	192141		195200 (vis)
S 3206	192141		195200 (vis)
S 3210	192145	292145	
S 3240	192145	292145	
S 3300	092620	292620	

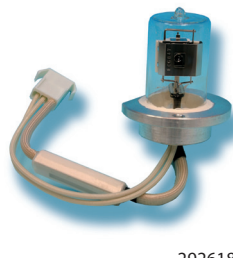
Thermo			
CE 100	192141		
CE 500	192141		
CE 1000	192141		
CE 2000	192141		
FL2000, FL3000			194141 (Xe)
Focus (2000)	192141		195200 (vis)
LC304			194141 (Xe)
Linear 200	192141		195200 (vis)
Linear 201	192141		195200 (vis)
Linear 203	192141		195200 (vis)
Linear 204	192141		195200 (vis)
Linear 205	192141		195200 (vis)
Linear 206	192141		195200 (vis)
SP100	192141		195200 (vis)
SP200	192141		195200 (vis)
SP770	092026		
SP970	092026		
SP8200	092084		
SP8400	092084		
SP8440	092084		
SP8450	092084		
SP8480	092026		
SP8490	092084		
SP8773(XR)	092026		
Surveyor	192140		094140 (vis)
UV-100	192141		195200 (vis)
UV-150	192141		
UV-200	192141		
UV-1000	192141		195200 (vis)
UV-2000	192141		195200 (vis)
UV-3000	192141		
UV-6000 LP	192140	292140	094140 (vis)



192618



092620



292618



292600



092026

# SPEKTRALLAMPEN SPECTRAL LAMPS

Manufacturer Model	D2 lamps P/N	DURANIUM L2D2 lamps P/N	Xe/Hg/vis lamps P/N
--------------------	--------------	-------------------------	---------------------



Turner			
330	092084		
430	092084		

Unicam			
4020	092003		
4021	092047		
4025	092003		
4110	092014		
Helios	192149		094761 (vis)
LC3	092003		
LC/UV	092003		
Solaar 929	092025		
Solaar 939	092025		
Solaar 959	092025		
Solaar 969	092025		
Solaar M5, M6	192030		
SP6, SP192, SP600	092021		
SP1960	092021		
SP6400, SP6450	092021		
SP30UV	092012		
SP700	092012		
SP800	092012		
SP1700	092012		
SP1750	092012		
SP1800	092012		
SP8000	092012		
SP8100	092012		
SP8800	092012		
SP500	092001		
SP8150, PU8150	092062		
SP8200, PU8200	092062		
SP8400, PU8400	092062		
SP8600, PU8600	092062		194062 (vis)
SP8620, PU8620	092063		194062 (vis)
SP8625, PU8625	092063		194062 (vis)
SP8650, PU8650	092062		194062 (vis)
SP8675, PU8675	092062		194062 (vis)
SP8450, PU8450	092024		
SP8700, PU8700	092024		
SP8710, PU8710	092024		
SP8720, PU8720	092024		194062 (vis)
SP8730, PU8730	092024		194062 (vis)
SP8745, PU8745	092024		
SP8750, PU8750	092024		
UV1	192149		094761 (vis)
UV2, UV3	192149		094760 (vis)
UV4, UV5	192149		094760 (vis)
UV300	192149		094760 (vis)
UV500, UV550	192149		094760 (vis)

Manufacturer Model	D2 lamps P/N	DURANIUM L2D2 lamps P/N	Xe/Hg/vis lamps P/N
--------------------	--------------	-------------------------	---------------------



Varian			
AA 275	092058		
AA 400	092058		
AA 475	092058		
AA 775	092058		
AA 875	092058		
AA 975	092058		
AA 1275	092058		
AA 1475	092058		
AA 3000	092058		
Cary 1	092916		094804 (vis)
Cary 50	092916		094805 (vis)
Cary 100	092916		094804 (vis)
Cary 210	092084		
Cary 219	092084		
Cary 300	092916		094804 (vis)
Cary 400	092916		094805 (vis)
Cary 500	092916		094805 (vis)
Cary 2200	092084		
Cary 2300	092084		
ProStar 310	192118	292118	
ProStar 320			094041 (Xe)
ProStar 325	192117	292117	194117 (vis)
ProStar 330 PDA		292119	
ProStar 335	192117	292117	194117 (vis)
ProStar 340	192141		
ProStar 345	192141		
ProStar 363			260021 (Xe)
SpectraAA 10	092058		
SpectraAA 20	092058		
SpectraAA 30	092058		
SpectraAA 40	092058		
SpectraAA 250	092916		
UV Super Scan	092058		
UV10	092033		
UV50, UV100, UV200	192118	292118	
UV634, UV635	092051		
Vista 5000, 5500	192118	292118	
75 Series	092058		
2050	092055		
2550	092725	292725	
9050	192118	292118	
9065	192038		
9070			194008 (Xe)



094761



192149



092084



094804



092916

Manufacturer Model	D2 lamps P/N	DURANIUM L2D2 lamps P/N	Xe/Hg/vis lamps P/N
--------------------	--------------	-------------------------	---------------------

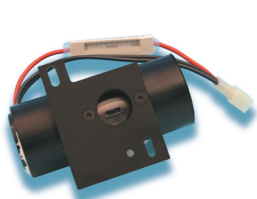


Waters			
Alliance 2487, 2488	192334	292334	
LC-Module 1	192148		
450	192026		
470 **			260021-UXL (Xe)
474 **			260021-UXL (Xe)
480, 481, 481 AZ	092084		
484	192146		
486	192148	292148	
990	192132		
991	192132		
994	192132		
996, 2996	192333	292333	

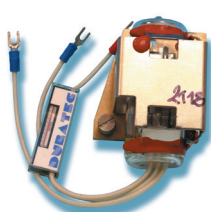
Zeiss			
CLD 300 *	192128		
CLD 500	192127		
CX 75 *			194129 (Xe)
DM 4	092130		094815 (vis)
DMR 10	092130		094818 (vis)
DMR 21	092130		094818 (vis)
DMC 25	092130		094818 (vis)
ELKO II			094816 (vis)
M 500	192129		094129 (vis)
PM 6	092130		094815 (vis)
PM 7	092130		094815 (vis)
PM 2 (DLC)	092130		194740 (vis)
PMQ II	092130		094818 (vis)
PMQ III	092130		094818 (vis)
Specol UV/VIS	192129		094817 (vis)
Specord S5 (UV/VIS)	192129		094817 (vis)
Specord S10 (UV/VIS)	192129		094817 (vis)
Specord 40	192129		094817 (vis)
Specord 50	192129		094817 (vis)
Specord 200, 205	192129		094129 (vis)
Spekol 1100	192129		094815 (vis)
Spekol 1200	192129		094815 (vis)
Spekol 1300	192130		094815 (vis)
Spekol 1500	192130		
Spekol 2000	192130		

\* Althalter notwendig / old holder required

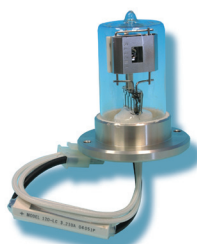
\*\* Lampe ohne Halter / lamp only



192141



192118



292334



192148

# INDEX INDEX

P/N Seite | Page

092001	8, 12
092003	12
092004	5
092009	4
092012	12
092013	7
092014	12
092016	4, 5
092021	12
092024	12
092025	12
092026	10, 11
092027	6
092028	6
092029	4, 7
092032	5
092033	8, 12
092042	4
092043	5, 7
092044	8, 10
092045	4
092046	9
092047	12
092049	7
092050	10
092051	8, 12
092054	10
092055	8, 12
092056	10
092057	10
092058	12
092059	6
092062	12
092063	12
092066	6
092072	6
092076	8
092084	4, 5, 8, 12, 13
092085	9
092086	11
092130	13
092303	9
092340	9
092341	9
092342	9
092416	4
092600	11
092620	9, 11
092720	10
092725	8, 12
092730	8
092853	4
092916	12
094004	5
094005	5
094025	8
094041	10, 12
094045	4
094046	4
094055	8
094072	10
094122	9
094124	9
094126	4, 10
094129	13
094138	9
094140	11
094254	6
094301	9
094304	8, 9
094360	5
094361	5, 8
094364	6
094605	9, 11
094610	6

P/N Seite | Page

094618	11
094636	8
094760	9, 12
094761	12
094804	12
094805	12
094815	13
094816	13
094817	13
094818	13
094860	8, 11
094861	7
094862	7
094866	7
192004	5
192005	5
192006	5, 9
192026	13
192030	12
192039	4, 7
192049	7, 10
192051	7
192072	10
192073	10
192105	5
192107	6
192109	6
192117	12
192118	12
192120	8, 9
192122	5, 9
192123	9
192124	10
192127	13
192128	13
192129	13
192130	12, 13
192132	8, 13
192137	7, 9
192138	9
192139	9
192140	11
192141	11, 12
192142	10
192143	10
192144	10
192145	11
192146	13
192147	10
192148	13
192149	9, 12
192181	9
192204	6, 7
192205	4, 5
192303	9
192304	8
192305	5
192306	5
192307	5
192308	5
192309	5
192312	8
192314	8
192333	13
192334	13
192360	5
192361	5
192399	4, 7
192400	4, 7
192617	11
192618	11
192619	11
192713	8
192714	8, 9
192720	10

P/N Seite | Page

192726	8
192739	10, 11
192740	10, 11
192750	6
192751	6
192804	4
192853	4
192883	4
192885	4, 7
192886	4
192887	4
194008	12
194010	5
194062	12
194099	9
194109	6
194117	12
194122	9
194129	13
194141	6, 11
194205	5
194210	5
194426	8
194430	8
194620	11
194636	8
194710	10
194730	10
194740	13
194802	4
194804	4
194815	6
194816	6
194846	4
194885	4, 7
292005	5
292006	5, 9
292026	4, 10
292049	7, 10
292056	5
292105	5
292107	6
292117	12
292118	12
292119	12
292120	8, 9
292140	11
292145	11
292148	13
292204	6, 7
292205	4, 5
292307	5
292312	8
292314	8
292333	13
292334	13
292600	11
292618	11
292619	11
292620	9, 11
292715	11
292725	8, 12
292726	8
292727	8
292740	10, 11
292853	4
292883	4
292885	4, 7
292886	4
292887	4
926200-101	6
926200-102	6
926200-103	6





Schambeck SFD GmbH  
Rhöndorfer Strasse 51  
D-53604 Bad Honnef  
Germany  
Telefon +49-2224-9239-0  
Fax +49-2224-9239-20  
e-Mail [mailto@schambeck-sfd.com](mailto:mailto@schambeck-sfd.com)