

Schambeck SFD GmbH

Drieschweg 13a, D - 53604 Bad Honnef

Phode: +49-(0)2224-9239-0, Fax: +49-(0)2224-9239-20

Internet: www.schambeck-sfd.com, e-mail: mailto@schambeck-sfd.com

Chromatogram Info:

File Name : C:\Clarity\WORK2\DATA\RI2000-RI2012\RI2012-28.09.2011-1.PRM File Created : 04.04.12 13:04:42
 Origin : Acquired, Acquisition started 28.09.11 08:58:13 Acquired Date : 28.09.11 09:58:14
 Project : C:\Clarity\Projects\Work2.PRJ By : Administrator

Sample Info:

Sample ID : 343 mg Glucose / 100ml bidest. Water Amount [ul] : 0
 Sample : ISTD Amount : 0
 Inj. Volume [mL] : 0,02 Dilution : 1

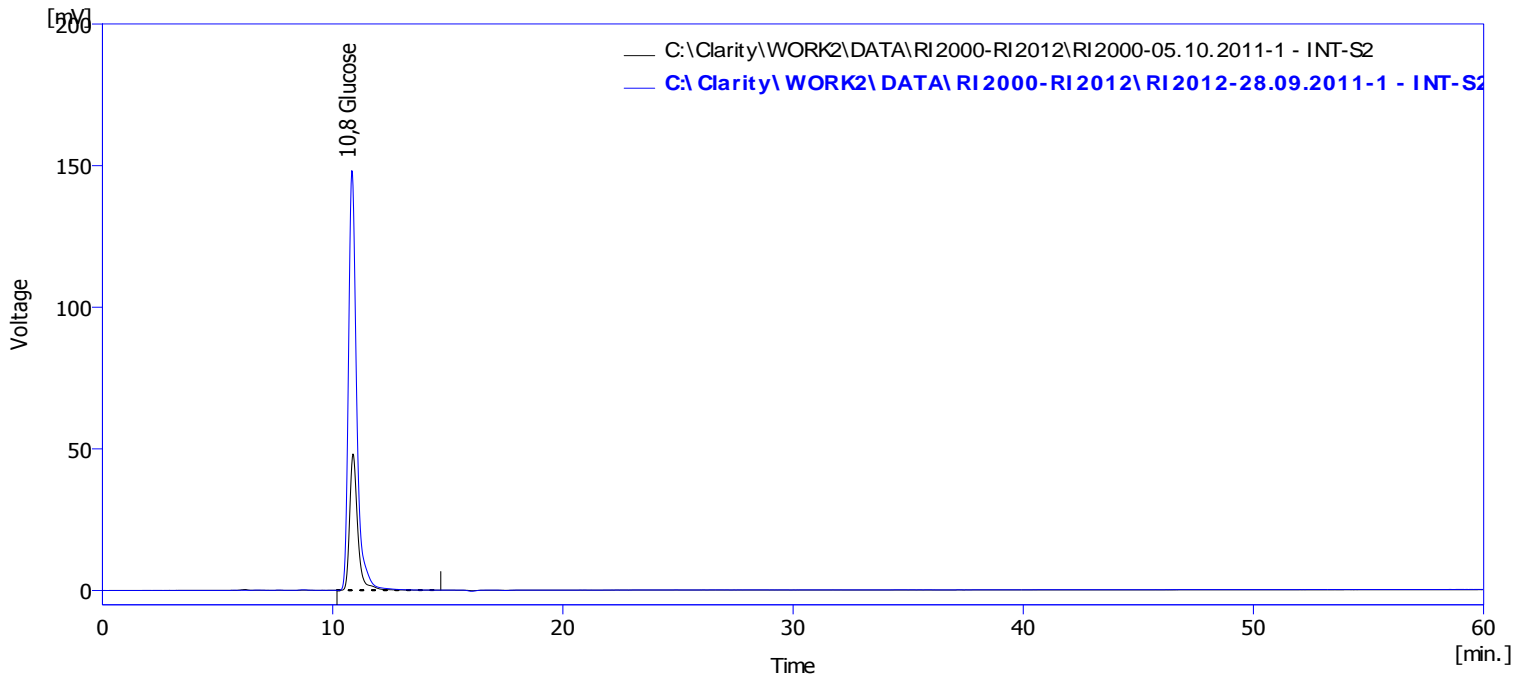
Method : RI2000-Testsystem 2 By : Administrator
 Description : RI-Testsystem 2
 Created : 31.08.06 15:44 Modified : 18.09.12 10:15

Column : Carbosep CHO-820 Ca++, 300*7,8mm SN Detection : Refractiv Index Detector
 12515717 -15/09/2011-
 Mobile Phase : bidest. Water Temperature : RI: OFF, Column: 80°C
 Flow Rate : 0,5 ml/min. Pressure : 35 bar
 Note : Calibration: 1mV of RI Signal is equal to 1 µRIU

RI2012 Calibration solution: 106,5 mg Glucose/100ml bidest. Water(500µRIU)

RI2000 Calibration solution: 343,0 mg Glucose/100ml bidest. Water(500µRIU)

Autostop : 60,00 min External Start : Start - Restart, Down
 Detector 1 : INT-S2 Range 1 : Bipolar, 1250 mV, 6,25 Samp. per Sec.
 Subtraction Chromatogram : (None) Matching : No Change



Summary Table

		Noise	Drift	Glucose				
				Reten. Time [min]	Compound Name	Area [mV.s]	Height [mV]	Signal/Noise
C:\Clarity\WORK2\DATA\RI2000-RI2012\RI2000-05.10.2011-1	INT-S2	0,008	0,289	10,88	Glucose	1171,57	48,15	6311
C:\Clarity\WORK2\DATA\RI2000-RI2012\RI2012-28.09.2011-1	INT-S2	0,010	0,389	10,83	Glucose	3675,48	148,19	14429

Schambeck SFD GmbH

Drieschweg 13a, D - 53604 Bad Honnef

Phode: +49-(0)2224-9239-0, Fax: +49-(0)2224-9239-20

Internet: www.schambeck-sfd.com, e-mail: mailto@schambeck-sfd.com

Chromatogram Info:

File Name : C:\Clarity\WORK2\DATA\RI2000-RI2012\RI2012-28.09.2011-1.PRM File Created : 04.04.12 13:04:42
 Origin : Acquired, Acquisition started 28.09.11 08:58:13 Acquired Date : 28.09.11 09:58:14
 Project : C:\Clarity\Projects\Work2.PRJ By : Administrator

Sample Info:

Sample ID : 343 mg Glucose / 100ml bidest. Water Amount [ul] : 0
 Sample : ISTD Amount : 0
 Inj. Volume [mL] : 0,02 Dilution : 1

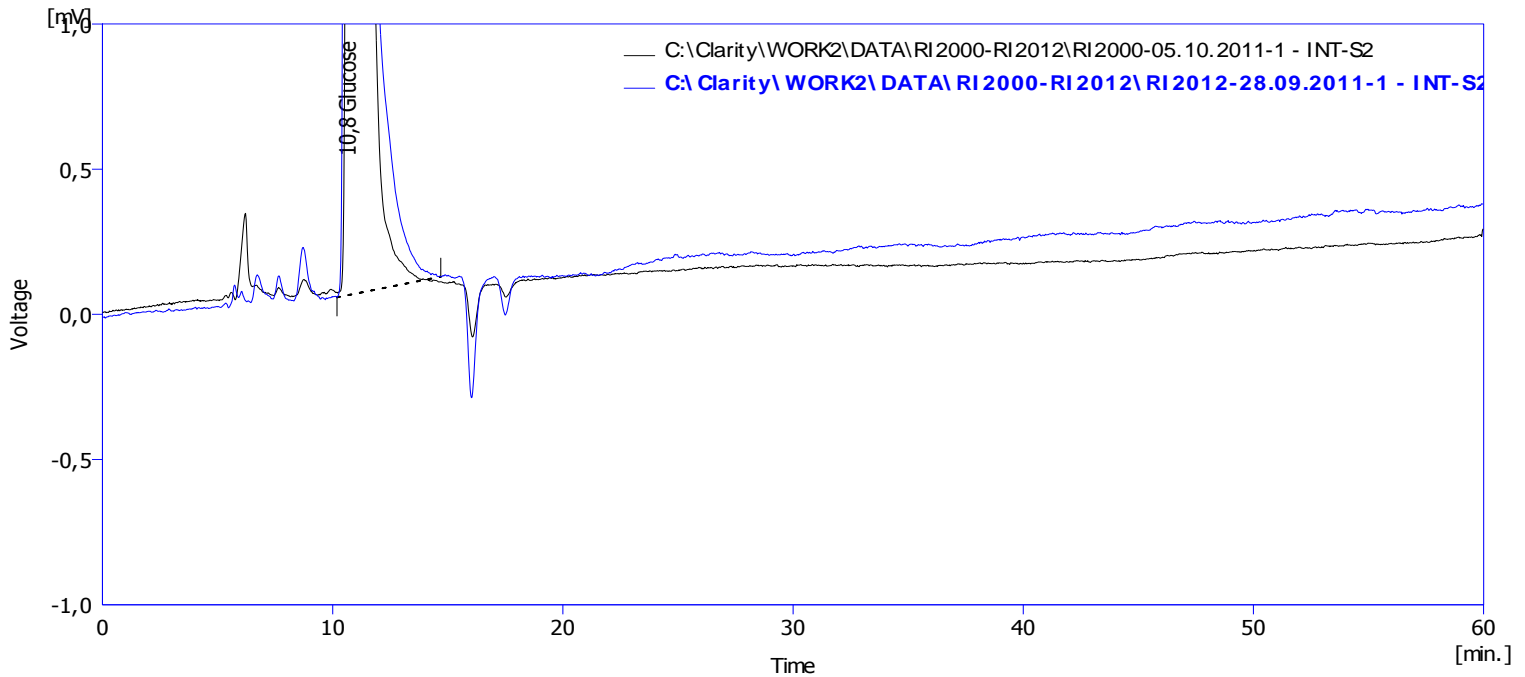
Method : RI2000-Testsystem 2 By : Administrator
 Description : RI-Testsystem 2
 Created : 31.08.06 15:44 Modified : 18.09.12 10:14

Column : Carbosep CHO-820 Ca++, 300*7,8mm SN Detection : Refractiv Index Detector
 12515717 -15/09/2011-
 Mobile Phase : bidest. Water Temperature : RI: OFF, Column: 80°C
 Flow Rate : 0,5 ml/min. Pressure : 35 bar
 Note : Calibration: 1mV of RI Signal is equal to 1 µRIU

RI2012 Calibration solution: 106,5 mg Glucose/100ml bidest. Water(500µRIU)

RI2000 Calibration solution: 343,0 mg Glucose/100ml bidest. Water(500µRIU)

Autostop : 60,00 min External Start : Start - Restart, Down
 Detector 1 : INT-S2 Range 1 : Bipolar, 1250 mV, 6,25 Samp. per Sec.
 Subtraction Chromatogram : (None) Matching : No Change



Summary Table

		Noise	Drift	Glucose				
				Reten. Time [min]	Compound Name	Area [mV.s]	Height [mV]	Signal/Noise
C:\Clarity\WORK2\DATA\RI2000-RI2012\RI2000-05.10.2011-1	INT-S2	0,008	0,289	10,88	Glucose	1171,57	48,15	6311
C:\Clarity\WORK2\DATA\RI2000-RI2012\RI2012-28.09.2011-1	INT-S2	0,010	0,389	10,83	Glucose	3675,48	148,19	14429

Schambeck SFD GmbH

Drieschweg 13a, D - 53604 Bad Honnef

Phode: +49-(0)2224-9239-0, Fax: +49-(0)2224-9239-20

Internet: www.schambeck-sfd.com, e-mail: mailto@schambeck-sfd.com

Chromatogram Info:

File Name : C:\Clarity\WORK2\DATA\RI2000-RI2012\RI2012-28.09.2011-1.PRM File Created : 04.04.12 13:04:42
 Origin : Acquired, Acquisition started 28.09.11 08:58:13 Acquired Date : 28.09.11 09:58:14
 Project : C:\Clarity\Projects\Work2.PRJ By : Administrator

Sample Info:

Sample ID : 343 mg Glucose / 100ml bidest. Water Amount [ul] : 0
 Sample : ISTD Amount : 0
 Inj. Volume [mL] : 0,02 Dilution : 1

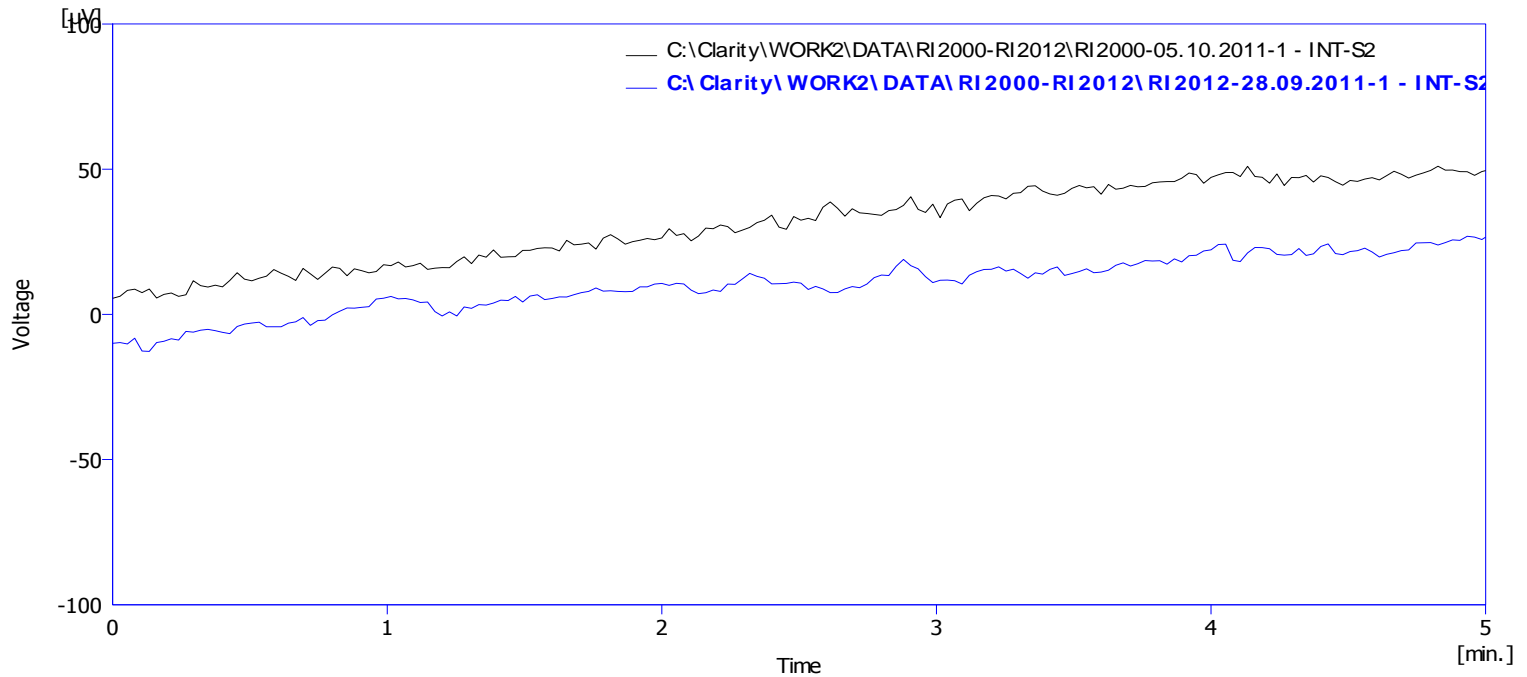
Method : RI2000-Testsystem 2 By : Administrator
 Description : RI-Testsystem 2
 Created : 31.08.06 15:44 Modified : 18.09.12 10:13

Column : Carbosep CHO-820 Ca++, 300*7,8mm SN Detection : Refractiv Index Detector
 12515717 -15/09/2011-
 Mobile Phase : bidest. Water Temperature : RI: OFF, Column: 80°C
 Flow Rate : 0,5 ml/min. Pressure : 35 bar
 Note : Calibration: 1mV of RI Signal is equal to 1 µRIU

RI2012 Calibration solution: 106,5 mg Glucose/100ml bidest. Water(500µRIU)

RI2000 Calibration solution: 343,0 mg Glucose/100ml bidest. Water(500µRIU)

Autostop : 60,00 min External Start : Start - Restart, Down
 Detector 1 : INT-S2 Range 1 : Bipolar, 1250 mV, 6,25 Samp. per Sec.
 Subtraction Chromatogram : (None) Matching : No Change



Summary Table

		Noise	Drift	Glucose				
				Reten. Time [min]	Compound Name	Area [mV.s]	Height [mV]	Signal/Noise
C:\Clarity\WORK2\DATA\RI2000-RI2012\RI2000-05.10.2011-1	INT-S2	0,008	0,289	10,88	Glucose	1171,57	48,15	6311
C:\Clarity\WORK2\DATA\RI2000-RI2012\RI2012-28.09.2011-1	INT-S2	0,010	0,389	10,83	Glucose	3675,48	148,19	14429