



HT200H

*THE HEADSPACE
AUTOSAMPLER THAT
WORKS WITH YOUR
CURRENT GC*



compact,
easy to use autosamplers from
HTA, the innovative
automation provider



The HT200H is a headspace autosampler made to meet the needs of static headspace injection for GC analysis and it operates with all major GC systems!

The elegant swivel head design mimics the actions of manual injection. This removes the need for transfer lines and minimises dead volume and sample absorption.

Mounting directly on to the top your GC, the 200H does not require any bench space and the tray can be mounted on either side of the unit.

The unit can be mounted on many different types of GC including Agilent 5890/6890, Varian 3300/3800, Shimadzu GC14/GC17 and many more. Recently a new interface has been released to interface to the new Shimadzu GC2014 and GC2010. This means that the complete range of liquid and headspace autosamplers is now compatible with all Shimadzu GCs, old and new.

The unit features a 40 vial sample tray and a 6 position oven. This maximises the efficiency of your analysis by incubating samples during analysis.

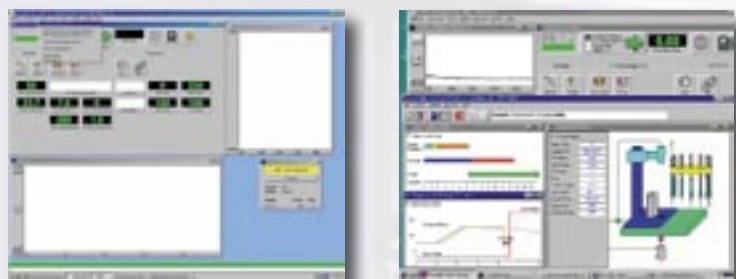
Agilent ChemStation® Interface

You can directly control your HTA autosampler without the need for an interface box or complex hardware thanks to Agilent's ChemStation® software.

The ChemStation® software is the industry's most widely sold data system, handling a wide variety of chromatographic applications such as LC, LC/MS, GC, A/D, CE and CE/MS.

The user interface for ChemStation was conceived to give you the maximum in comfortable and confident operation. task oriented views make ChemStation easy to learn and intuitive to operate.

A colour-coded system display shows the progress of your analysis and a configurable online plot enables monitoring of data acquisition in real time. Built-in standard report templates reduce the amount of time spent on routine tasks.



The HT200H is compatible with HP5890 and HP6890 GCs. If you upgrade an old autosampler to the HT200H and the GC is changed later on, the sampler has the ability to migrate to any new GC type and is therefore a very cost-effective option.



Mounting on your GC HT200H does not use any bench

Autosampler Operation

The instrument is controlled by a user friendly keypad (located on the base), or by a PC using HT-COMSoft Software. Installation is simple and the results exceptional.

The HT200H eliminates tubing, dead volume and sample absorption. The injection tower transports vials to the 6 position incubator for orbital agitation at the programmed temperature. The heated syringe then samples the headspace and injects directly into the GC.

Up to 40 headspace vials of 20ml or 10ml may be stored in the standard tray. After injection, the 2.5 or 5ml syringe is purged with inert gas. The swivel head design allows the injection port to be used for manual injections at any time.

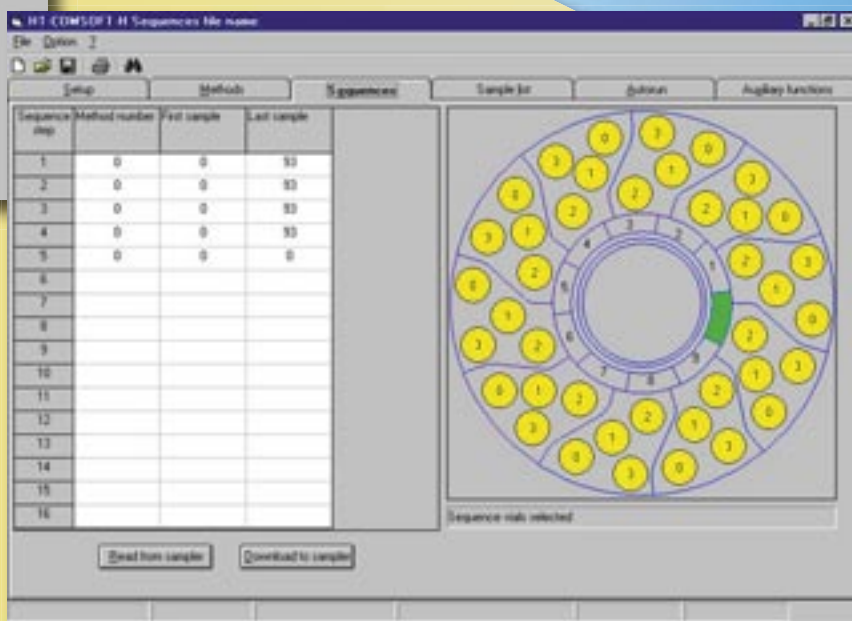
For maximum productivity, the HT200H processes samples so that injections start immediately after the previous run is completed.



Key Features

- No transfer lines means no sample crossover
- Rotating head design leaves injection port free for manual injection
- Progressive sample transfer means samples always ready when previous run completed
- May be configured for left or right operation
- Variable fill speed allows for wide range of sample viscosities
- Variable dwell time for temperature equilibration with column
- Variable oven speed

HT-COMSoft is a graphical user interface for programming the HTA autosamplers. It can be used to set up and store method and sample sequences, generate sample lists and print autosampler parameters.



Directly
, the
s not
space.



Vial transport is positive and reliable. No magnetic or special caps are required.



The autosampler utilizes a simple robotic head design which means that the injector port is always free - a big advantage if a manual injection is needed.



HT200H Specifications

Shaking Method: Orbital
 Incubation Oven: 6 position
 Syringe Size: 2.5, 5ml
 Tray Capacity: 40 Vials, 10 or 20ml
 Cleaning System: Nitrogen flush

Conditioning

Oven Temperature: 40 - 150°C
 Time: 0 - 23h 59m
 Progressive Increase: 0 - 9h 59m
 Shaker Speed: 320 - 720 rpm
 Shaking Cycles On/Off: 0 - 9.9 mins

Physical Characteristics

Dimensions (W x H x D): 420 x 620 x 400mm
 Mass: 11.5kg

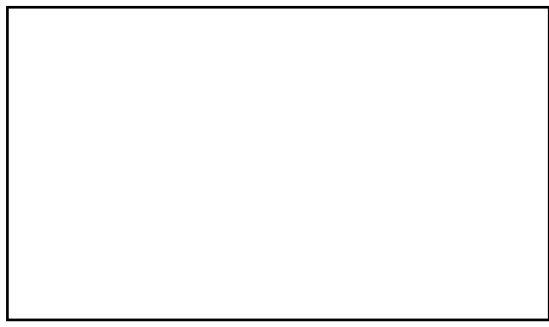
Sampling

Syringe Temperature: 40 - 150°C
 Pre-fill Volume: Steps of 0.01ml
 Pull Up Strokes: Up to 15 Strokes
 Equilibrium Delay: Up to 60 secs
 Sampling Volume: Steps of 0.01ml
 Filling Speed: 0.1 - 100ml/min

Injection

Sampling Repeats: Up to 15
 Waiting Time between Samples: 0 - 99 mins
 Injection Speed: 0.1 - 100ml/min
 Waiting Time (before and after injection): 0 - 99 secs

Your Local Dealer:



HTA, the company

HTA is a major European autosampler and instrument manufacturer, based in Brescia, Italy. HTA design and manufacture scientific instruments and laboratory automation.

HTA GC and headspace autosamplers are sold by GC companies around the world.

www.hta-it.com

