



# HT300A

*THE LIQUID GC  
AUTOSAMPLER THAT  
WORKS WITH YOUR  
CURRENT GC!*



compact,  
easy to use autosamplers from  
HTA, the innovative  
automation provider

The HT300A is a GC autosampler made to meet the liquid injection needs of your analysis. A simple, elegant, reliable and inexpensive way to give productivity a significant boost and extend the life of your existing GC!

## Autosampler Operation



The HT300A can be controlled by the user-friendly integrated keypad, or by a PC using the HT-COMSoft Software.

The automatic injection sequence may have up to 15 steps which can be programmed to include:

- First sample of group
- Last sample of group
- Analytical method
- Number of injections for each sample
- Pre- and Post-washing solvent position
- Internal Standard position (if used)

The HT300A Autosampler is available with a 10 position fixed tray or with a 110 position rotating tray for 2 or 2.5ml vials. Syringes of 1µl to 100µl may be used and with the option of a special large injection version, this can be increased to 1000µl per sample.



### Internal Standard

Internal standards are used to ensure your analyses are accurate and to make allowances for any variations in the GC performance. The internal standard should have a predictable retention time (that is completely resolved from the rest of the sample) and should make up a known amount of the total sample injected.

Using internal standards on the HT300A is simple and does not require any samples to be measured or weighed. The volumes of the internal standard and the sample are entered into the method. The sampler first pulls up the internal standard, then inserts an air gap to prevent mixing, followed by the main sample. In this way it is easy to ensure that 10% (or any other value) of the injected sample is made up using the internal standard.



### Key Features

- Syringe may be washed with solvent or sample
- Injections may be made on two columns (high throughput and confirmation mode)
- Rotating head design leaves injection port free for manual injection
- Internal standard sampling
- Memory stores 10 different methods
- Variable fill speed allows for wide range of sample viscosities
- Sampling system eliminates air bubbles
- Programmable sampling and injection speed



## HP5890 Autosampler Replacement

The HT300A offers HP5890 and HP6890 users a simple and cost effective way to replace their old autosamplers without replacing the complete GC system - thanks to Agilent's ChemStation® software, the HT300A can be controlled directly, without the need for an interface box or complex hardware.

The ChemStation® software is the industry's most widely sold data system, handling a wide variety of chromatographic applications such as LC, LC/MS, GC, A/D, CE and CE/MS.

The software enables the HT300A to be used as a direct replacement for the HP7673 or HP7683 autosampler while the ChemStation® set-up continues as before, thus making it very simple for you to upgrade your GC system.



The HT300A is not only compatible with the HP5890 and HP6890 GCs, but with all other major models of GC in use today. If you upgrade an old autosampler to the HT300A and the GC is changed later on, the sampler has the ability to migrate to any new GC type and is therefore a very cost-effective option.

Benefits include:

- No requirement to eliminate a good GC
- Direct replacement gives identical results using the same methods
- No re-training required - minimum expense and downtime
- Full compatibility for easy GC migration at a later date



**Running only a small number of samples?...**

## HT310A

**provides an economical solution**

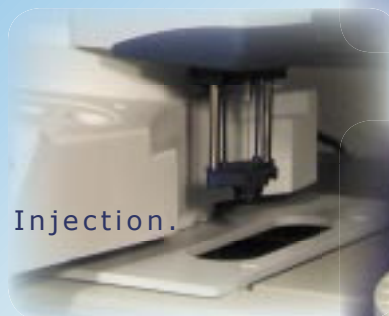
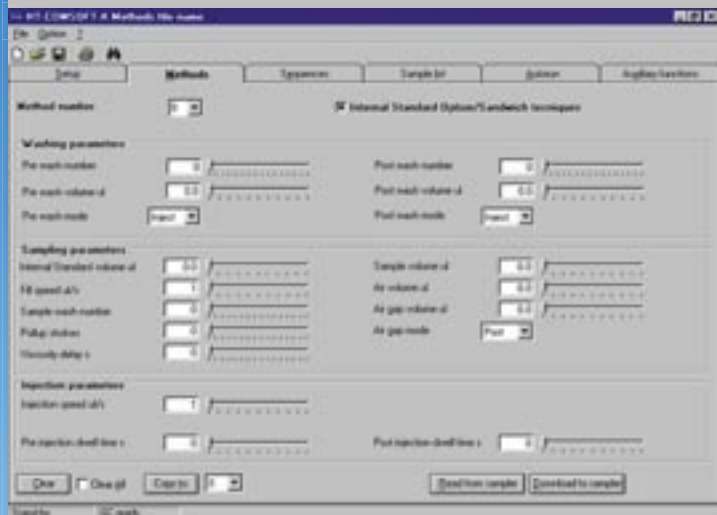
The HT310A Autosampler is an economical solution if you need high levels of reproducibility that an autosampler gives, but do not run large sample batches.

The HT310A has a fixed "Pocket" that holds up to 10 sample vials and gives the sampler a very small footprint. It uses a similar interface to the HT300A (the ChemStation interface is not available) and can be interfaced with most Gas Chromatographs. The functionality and ease of use remains the same as the 110 position HT300A and software control is available if required. Up to 10 sample methods can be stored and the autosampler includes control over all injection parameters.





**HT-COMSoft** is a graphical user interface for programming HTA autosamplers. It can be used to set up and store method and sample sequences, generate sample lists and print autosampler parameters.



## HT300A Specifications

**Syringe Sizes:** 1, 10, 25, 50, 100 & 1000µl (1000µl with large volume version only)

**Tray Capacity**

Sampling: 110 Vials, 2 or 2.5ml  
 Sample Volume: Steps of 0.1µl  
 Air Volume: Steps of 0.1µl  
 Aspirating Speed: 1 - 100µl/sec  
 Needle Washing: Up to 15 Strokes  
 Washing Mode: Every Injection, Sample or Step

Air Bubble Removing: Up to 15 Strokes  
 Viscosity Time: 0 - 15 secs

**Injection**

Injection Speed: 1 - 100µl/sec  
 Waiting Time (before and after inject): 0 - 99 secs  
 Injection Depth: Variable

**Internal Standard Technique**

IS Volume: Steps of 0.1µl  
 Air Gap Volume: Steps of 0.1µl  
 Mode: 1 or 2 air gaps

**Control**

Electrical Control: RS232 and TTL

**Physical Characteristics**

Dimensions (W x H x D): 420 x 520 x 400mm  
 270 x 520 x 400mm (Pocket)

Mass: 9.0kg  
 8.0kg (Pocket)



### Your Local Dealer:

**Schambeck SFD GmbH**  
**Rhöndorfer 51**  
**DE- 53604 Bad Honnef**  
**Phone: ++49-2224-9239-0**  
**Fax: ++49-2224-9239-20**  
**Internet: www.schambeck-sfd.com**  
**e-mail: mailto@schambeck-sfd.com**

### HTA, the company

HTA is a major European autosampler and instrument manufacturer, based in Brescia, Italy. HTA design and manufacture scientific instruments and laboratory automation.

HTA GC and headspace autosamplers are sold by GC companies around the world.

www.hta-it.com

