

Using the E-mail feature of PeakSimple version 3.84 and later

PeakSimple version 3.84 and later include a e-mail feature which allows the user to send a e-mail containing the results of the chromatogram at the end of every run, or only when an error condition is detected.

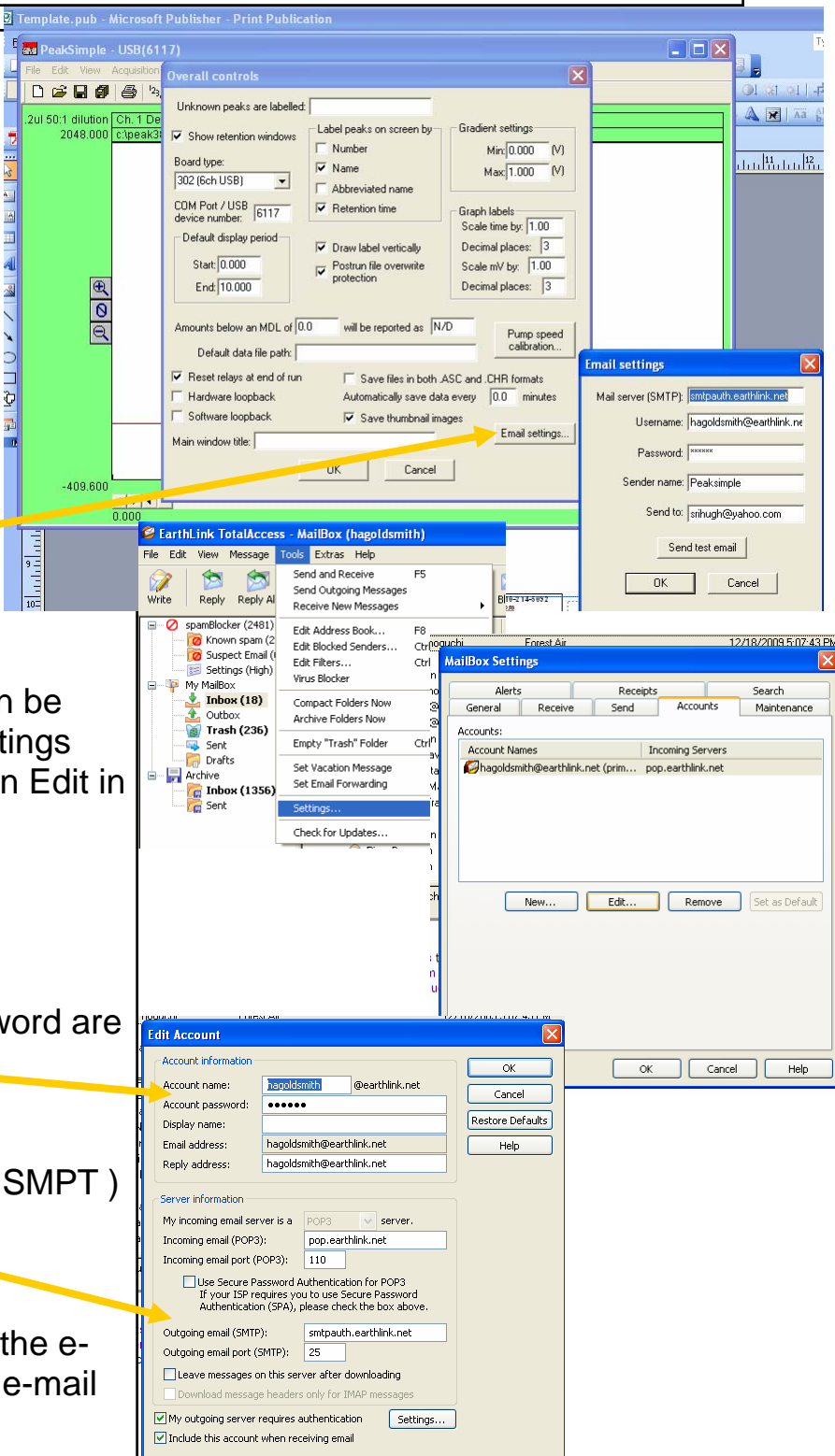
The e-mail send to address is entered in the Edit/Overall screen by clicking the Email Settings button.

Most of this information can be found by clicking Tools/Settings and then Accounts and then Edit in your e-mail application.

The "username" and password are listed here

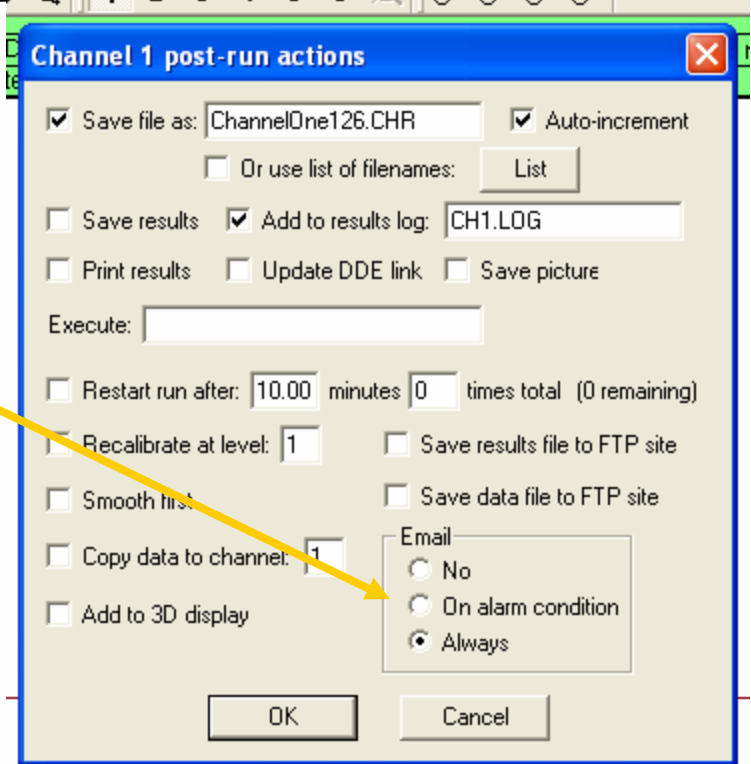
The outgoing mail server (SMTP) is listed here.

In the "Send To" box enter the e-mail address you want the e-mail sent to.



Using the E-mail feature of PeakSimple version 3.84 and later

In the Postrun box for each channel you can select whether to send an e-mail:
Never (No)
On Alarm Condition only
Always



Set the Alarm conditions in the Components/Details/Alarm Details screen.

